

UPDATE 2

CONTINUATION FROM UPDATE 1.

On 24th July 25, 2017 serious work started. On this day, a number of things were done which include;

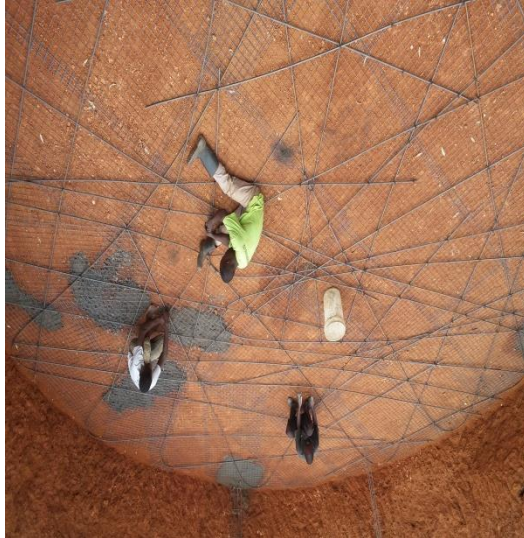
1. Collecting water from the nearby swamp using a vehicle on which we put drums and Jerrycans, then we pour in the improvised place. This swamp is about four kilometers away from the school. I think this will help us save because we are now in the dry season and using national water for construction is too expensive for us because it is shs 3,000/= per unit. And basing on the fact that it is on and off, will even slow the work.

Below is how we collect water.

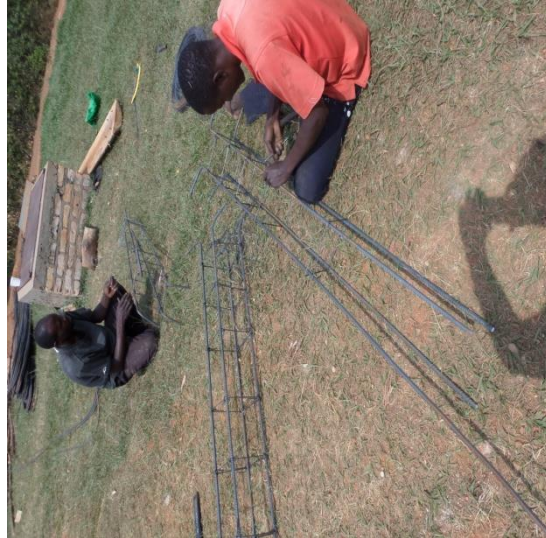


This is how the construction of the tank started.

They laid the wire mesh and the iron bars first and fixing the poles so as to make the floor very strong.



Fastening wire mesh and iron bars.



Fastening poles

Below the concret work followed.



Through the pit wide, concrete took only two days.

We are so blessed that we got committed workers, that is after only one day construction begun straight away.

Below is how they started it.



I think you remember that the diameter 30ft. That is how big it is.

Really the tank being too wide forced the builders to divide it into four portions to make it strong.





Not only putting the walls as I mentioned above will make the tank strong, but also the builders thought of putting more ring beams to make the walls more strong and also preventing it from being destroyed by Earthquake.



The second ring beam.



Third step after the second ring beam.

The third, "ring beam" is the last one and it is also already done.



The last part on which the last ring beam was put.

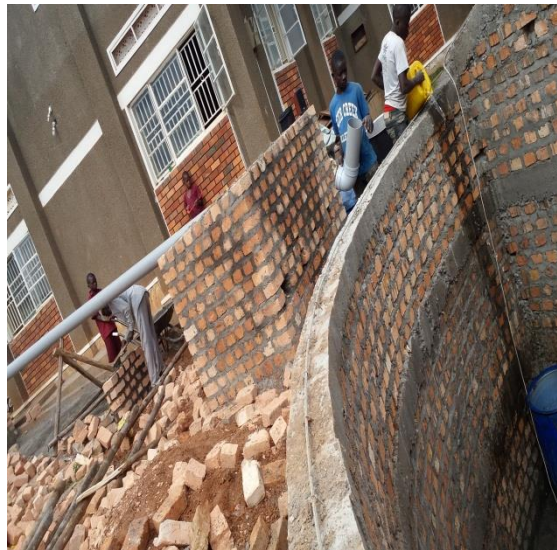


One of the chambers.

On the level below , plastering is being done, construction of manholes, then connection of the pipe that will pour water straight to the tank from the manholes.



Plastering in process.



Construction of Manholes.



Connection from the filter to tank.



One Munhall to collect water and the filter.



All the four chambers are now well plastered and that's how they are moment.

This is the step on we are. They are covering the outside part of the tank with wire mesh then plaster it as you see in the picture below. That pipe is the outlet.



We will keep in touch. Thank you.